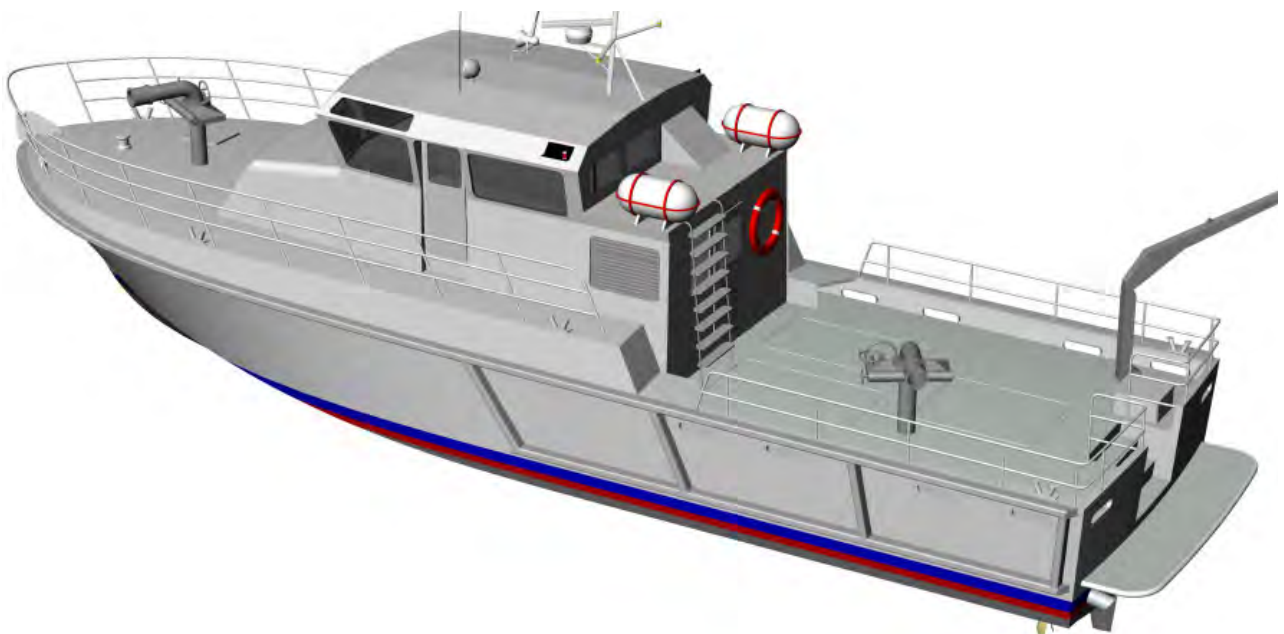


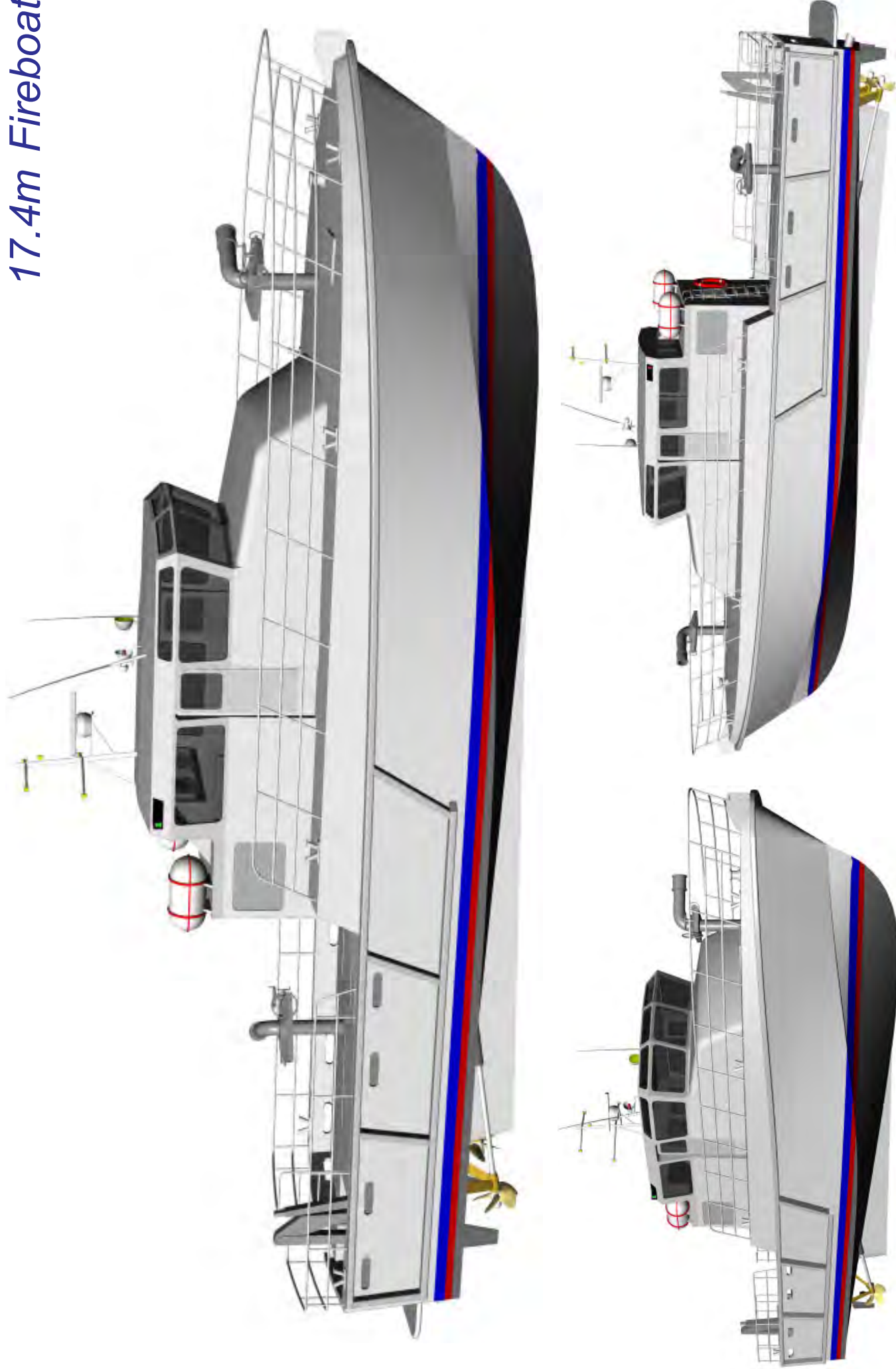
# AluCraft

## 17.4m Fireboat



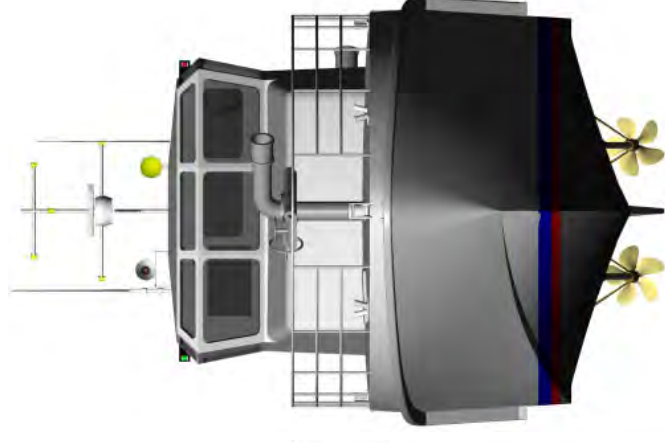
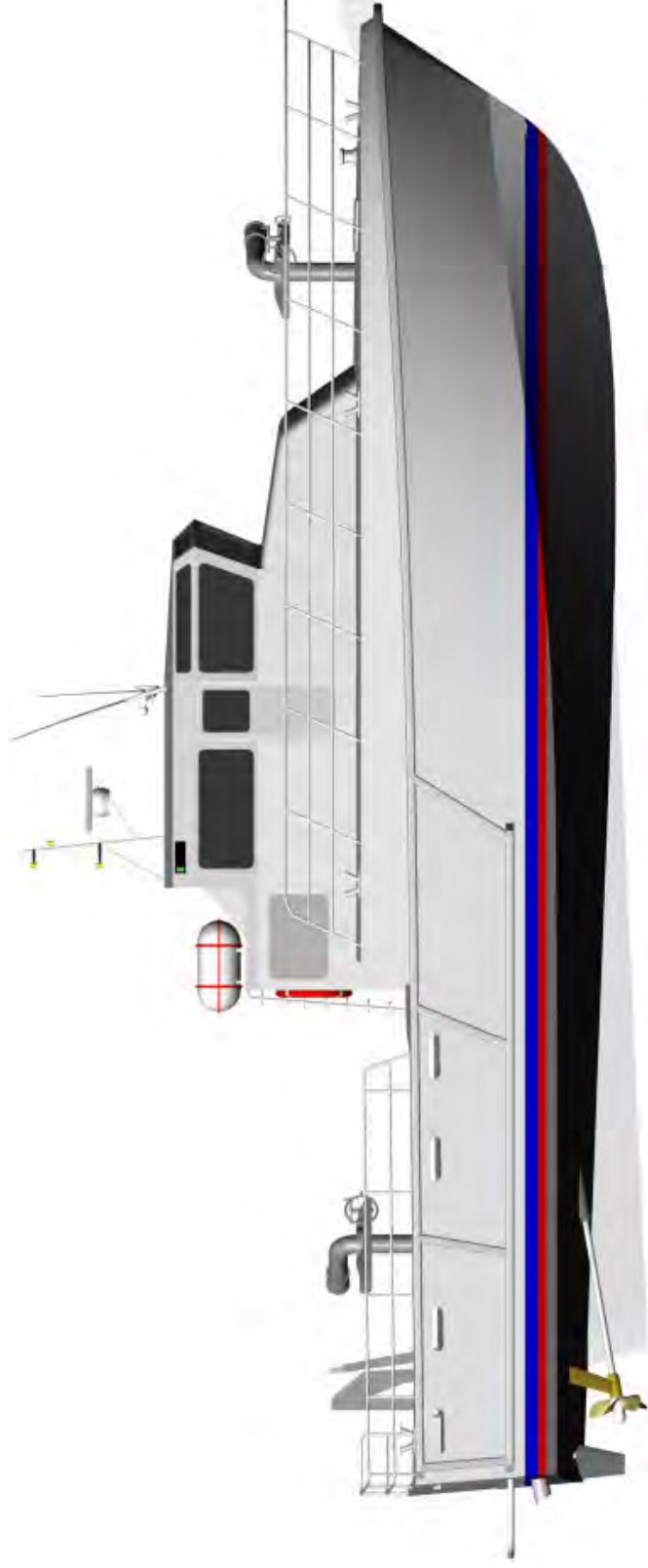
For Further Information Contact  
[enquiries@aluminumnow.com](mailto:enquiries@aluminumnow.com)

# 17.4m Fireboat



# 17.4m Fireboat

# AluCraft



LOA: 18.4m  
Lmoulded: 17.4m  
LWL: 16.0m  
Beam : 4.6m  
Draft: 1.30m  
Fuel: 3000lts  
Power: 2 x 433kW  
Speed : 20 knots

Classification :  
DNV R3 PATROL  
USL 2B

Construction :  
Marine Grade Aluminium





# 17.4m FIREBOAT FOR CIVIL DEFENCE

## PRINCIPAL PARTICULARS

LOA: 17.4m  
 Lmoulded: 17.4m  
 LWL: 16.0m  
 BEAM: 4.6m  
 DRAFT: 1.30m  
 AIR DRAFT: 5.0m  
 SPEED: 20knots  
 MAIN ENGINE: 2 x CUMMINS QSM11  
 433kW @ 2100rpm  
 GEARBOX: 2 x ZF325-1A  
 PROPULSION: 2 x FIXED PITCH PROPS  
 GENSET: 2 x NORMACH 25kVa  
 FUEL: 3000lts  
 FRESH WATER: 500lts  
 SULLAGE: 300lts  
 DECK GARGO: 8 tonnes  
 AFT DECK AREA: 27m<sup>2</sup>  
 CREW: 4

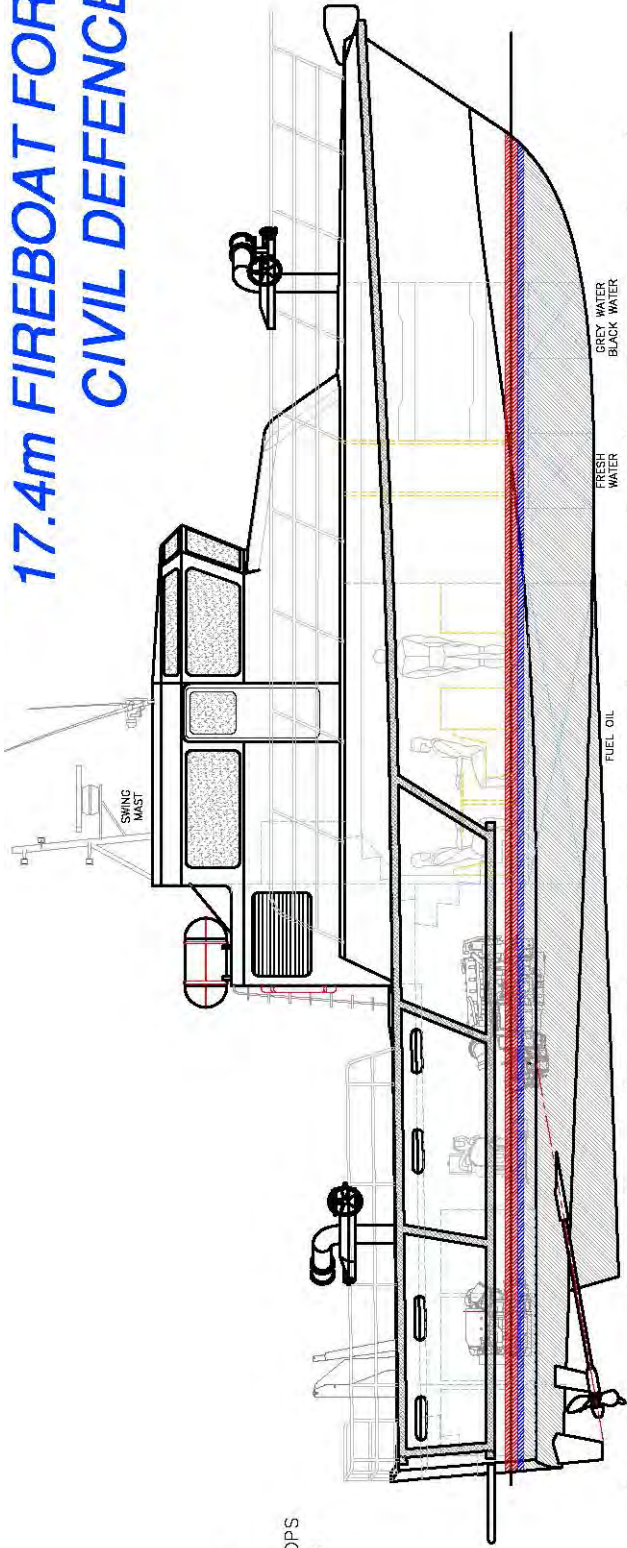
## SURVEY:

HULL  
GERMANISCHER LLOYDS

100 A5 OC2 HSDE Patrol Boat

MACHINERY & SAFETY  
QUEENSLAND TRANSPORT USL 2B

CONSTRUCTION:  
MARINE GRADE ALUMINIUM

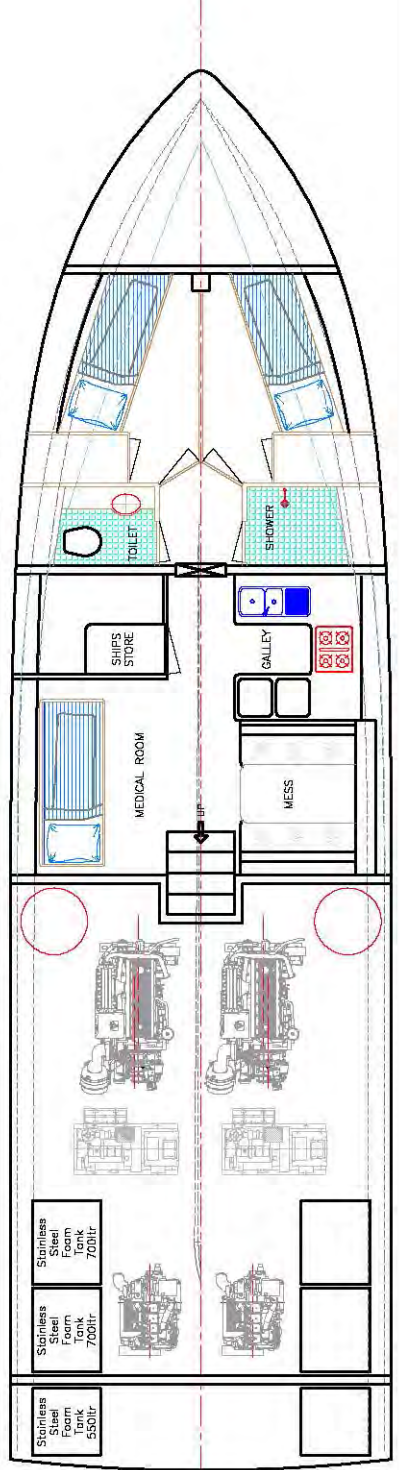
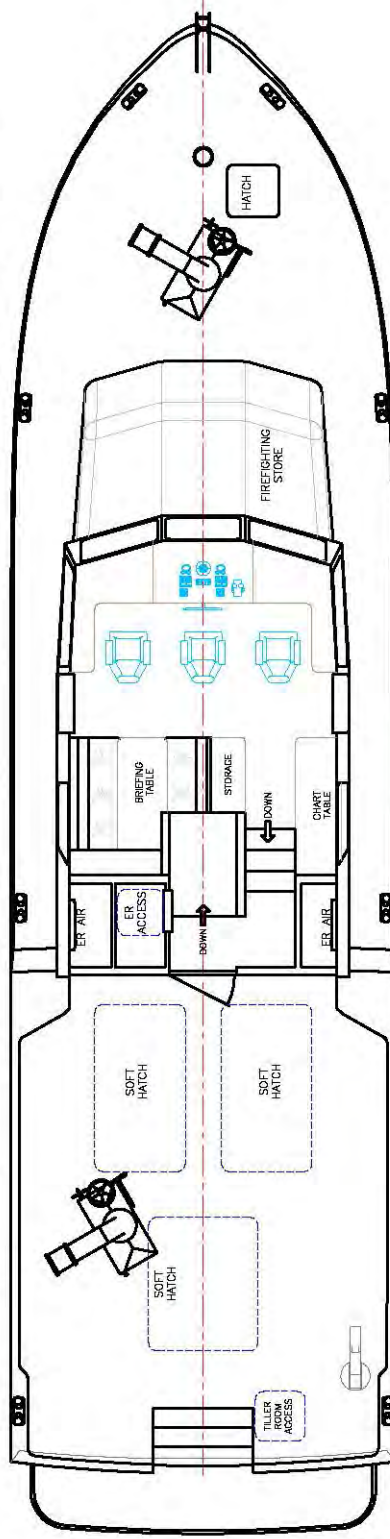


0 1 2 3 4 5 6 7 8 9 10 11 12 13 14 15

FUEL OIL

FRESH WATER

GREY WATER  
BLACK WATER



## FIREFIGHTING EQUIPMENT

SUPPLIED by NAFFCO Co.  
 PUMP ENGINE: 2 x CUMMINS 4BT3.9-M  
 100kW @ 2100rpm  
 FIRE PUMPS 2 x DESMI 215m<sup>3</sup>/hr 10bar  
 FIRE MONITORS: 2 x REMOTE CONTROLLED  
 SKUM F.M 200/K G  
 FOAM: 3900lts